

EUREKA EXPRESS

VOL XXXIII No. 10 Circ 298

NOV/DEC 2012



Merry Christmas

GUEST EDITORIAL

Merry Christmas

WOW- 2012 is almost over! Before we get to the festive season spare a thought for all the local university and school students who have recently sat their University, Scholarship and NCEA exams – hope you all do well and get the results to continue on your future career paths or school endeavours in 2013.

My son Michael was studying for Level 2 Economics and piped up that he'd better make sure he knew at least 3 of NZ's top trade exports. Interested I ask him what they were and he gave me the list in descending order:

"Dairy, Meat, Oil, Wood, Machinery, Fruit, Aluminium, Fish, Electrical Machinery, Iron and Steel"

Sad thing about this list is our country's reliance on primary production and natural resources for our trade. Furthermore, there is an obvious lack of any significant manufactured products or textiles featuring in the top ten (besides a bit of metal and machinery). The dependence on primary production for trade highlights a vulnerability that our economy faces from risks of introduced organisms. We have already seen the devastation that PSA has had on ZESPRI's Gold Kiwifruit and the Varroa mite on the Bee Industry. I have noticed a major absence of bees around the garden in recent years and have taken to pollinating the fruit trees by hand. Let us all pray we never see "Foot and Mouth" disease arrive on our shores as the effects on our economy doesn't bare thinking about.

Anyway its only about 4 weeks to Christmas and I know you are all looking forward to holidays and enjoying the festive year with family and friends. This brings me to the question of how many of you have achieved your 2012 "New Years" resolutions? I am having trouble fulfilling mine which I have set as my number one priority for a number of years now. That is: *"To buy NZ made goods"*.

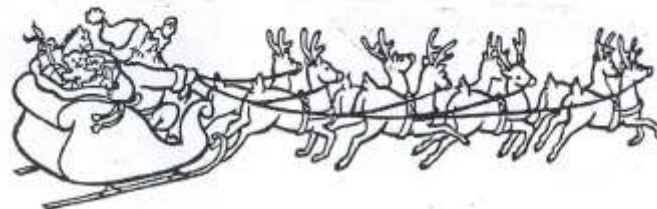
It is a massive challenge and difficult to achieve nowadays as so much is made in - you guessed it "CHINA". However, have you ever walked into a retail shop and asked the shop owner or assistant to see their New Zealand made clothes, shoes, appliances etc? Too often the answer is *"We don't have any"*. So to keep to my new year's resolution I just have to walk away dissatisfied and empty handed. It means as a consumer you have very limited choice when shopping! For me it is simple don't buy it unless its NZ made (upholding my NY's resolution). What it means is I have changed my mindset and focused on buying locally grown plants and produce and locally made crafts which is great and farmers markets are excellent for this. I have also opted to make things and if you can't then find someone else to make it. In some cases you find you can go without, if need be.

Luckily a while ago NZ made excellent quality clothes - the challenge is to find them. I did find some when I was going through my mum's wardrobe (wool and possum fur jerseys and some gloves) perfect for the Waikato frosty mornings. So there are probably a lot stacked in drawers and wardrobes or sitting in Hospice shops and on racks in second hand shops just waiting for a discerning "Buy New Zealand Made" consumer to find them. I think there is a niche market in NZ to make affordable, quality clothes again as when you look at the price of the foreign made clothes they are not that cheap. To me so called "cheap imported clothes" is a false economy as the clothes don't last, pull out of shape after one wear/wash and rip too easily. For instance my son's school shorts were originally made in NZ however the new ones I bought him came from China and retailed I think at the same or slightly higher price, however the fabric, design and quality is poorer.

So undeterred you all now know what my 2013 New Year's resolution is - to stick to my campaign of *"Buying NZ made goods"* and keep this country working! So if you think you are up to a *"Buy NZ made goods"* challenge give it a go next year.

It's going to be a long hot summer so all the best for a safe and happy Christmas and enjoy making all those New Year's resolutions. Cheers!

Kathryn Schicker



SNIPPETS



ENGAGEMENT CONGRATULATIONS to **Michelle Clarkin** who has become engaged to **James O'Connor** of Tauranga. Michelle, who is teaching in Tauranga, is the eldest daughter of Bernie and Jenny Clarkin of Schollum Road. Every best wish to you both.

GOLDEN WEDDING CONGRATULATIONS to **Robert and Bev Kimber** who celebrate their 50th Wedding Anniversary on December 22nd. Best wishes to you both for many more good years together.

FAREWELL TO EUREKA to **Trevor and Jane Woolston** who have sold their property on Hooper Road and moved in to Hamilton. Sadly, a family tragedy occurred as they prepared to move, when Trevor's son, Seth, died on November 16 in a car accident at New Plymouth. Our thoughts and deepest sympathy to all.

WELCOME TO EUREKA to **Ken and Esther Downing** who are now residing on Manor Park (ex Bourner home). Ken and Esther enjoy living close to family who all live in the Hamilton area. Phone 824 1113.

CONGRATULATIONS to two talented local children who did very well in the recent Tauwhare School "Tauwhare's Got Talent" competition. **Jeffrey Moke** of Eureka Road (Hinton's farm) won 1st prize with his hilarious comedy act, and **Ashleigh Mayall** of Eureka Road placed 3rd = **with her partner Lucy Holden** for their Irish dancing item. **Well done all of you who took part in a very entertaining afternoon.**

CONGRATULATIONS also to our very own local 'icebreaker' **Becky Walling** who was such a good sport. Being the voters choice, Becky, along with Principal Fiona Bradley, dived in to officially open Tauwhare School's super new pool. The school and parents are to be congratulated for their efforts over the last eight years in planning and fundraising to build this beautiful new pool. A huge achievement.

A BIG THANK YOU goes to our Recipe columnist, **Sharon Laurent**, for her sterling work over the past 2 ½ years providing us with regular lovely recipe ideas. We have truly appreciated your willing input Sharon and accept your retirement reluctantly. A new columnist will be welcomed in February.

SEASONS GREETINGS

The Eureka Express Committee joins me in wishing all our readers a safe and joyous Christmas and New Year.

Special thanks to our contributors over the past year, our distributors, advertisers and helpers. Without your support the Eureka Express would not continue. Keep those ideas, articles and snippets coming in.

See you in 2013

Gail



MARKET PLACE

CHRISTMAS TREES FOR SALE

\$20 - \$30 - Find us at 350 Vaile Road, Newstead
For further information phone 824 1008
Limited trees available.



LAND WANTED FOR LEASE

We are looking for 15ha or more of grazing for lease.
Please contact Nicola on 027 915 8888

DAIRY FARM WANTED FOR LEASE

Do you need a break from your farm? Local couple looking to lease a dairy farm in the Waikato Region. Ideally the farm would be around 70ha to 100ha.

We would like to secure a lease for at least 3-5 years starting 2013/2014 season. Could possibly even look at a lease to buy option.

Call Nicola on 027 915 8888

WANTED TO RENT

Female teacher at Westmount School wants to rent a 1-2 bedroom farm cottage in the area from 20 January 2013. Non smoker, no pets.
Please phone 027 266 8411.

St. Andrews and KFC (Kids for Christ) Tauwhare invite the Eureka and Tauwhare communities to our **Community Christmas Carol Service**

On: Sunday 9th December 2012, 7pm

At: Tauwhare Hall

Include; Tauwhare School singing, a story, carols and awards for the school and preschool Christmas Star Decoration competition.

Bring a plate for shared supper afterwards.



EUREKA EXPRESS

ADVERTISING RATES		CONTACTS - Gall or Gayle	
Classified Advertisements	Free	Gail Meyall (Editor)	Gayle Orr (Treasurer)
Small Business Advertisements	\$10 / month	70 Eureka Road	1139 SH26
• x 10 insertions	\$80 / year	Ph 8241 758	R D 6, HAMILTON 3286
One Third Page Advertisement	\$15 / month	Fax 8241 028	Ph 8241 713
• x 10 insertions	\$120 / year	e-mail:	e-mail: sorr@xtre.co.nz
One Half Page Advertisement	\$20 / month	editor@eurekaexpress.co.nz	
• x 10 insertions	\$160 / year		

Tauwhare School

100 Years of Excellence
1917-2017



Bruce Wills,
President
federated
farmers NZ

THE POOL IS OPEN

Blessing
the Pool



Nikita
Haworth
Para
Olympian
Swimmer



Becky
Walling is a
good sport!



I can't wear
my heels??!



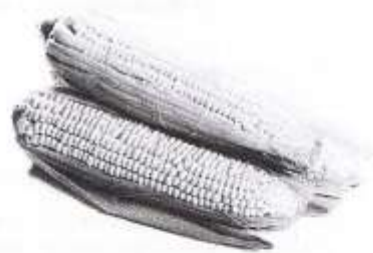
Linda Cook – Once
again winner of the
Enviro Schools Most
Outstanding Lead
Teacher Award 2012



IN YOUR GARDEN

The garden generally is approximately 2 to 3 weeks later than the average year, but of course that's no reason to rest. The soil temperature is rising and growth is increasing calling for extra attention to watering, feeding and staking. Water before plants show signs of stress, fertilize regularly to maintain growth and stake fruiting plants as the weight of developing fruit threatens to break branches. Mulch gardens to retain soil moisture over summer and watch out for summer pests and disease, which will be on the increase with warmer weather.

Plant sweetcorn now, plant the seeds directly into the ground, best to plant in blocks, 1cm deep and 20cm apart, rather than rows. Grow sweetcorn with runner beans and squash, this combination is known as "Three Sisters". Once growing keep corn well watered as lack of water is the main cause of small cobs and dry kernels. Fruiting crops of zucchini, pumpkins, melons, cucumber, and squash all happily grow with sweetcorn, then fill up any spare corner with lettuce or you favourite salad greens.



It's time to fertilize blossoming citrus trees to give them a boost. If you have new citrus trees, remove the developing fruit in the first year so that the tree can concentrate on developing roots. If you don't do this you will be compromising next years fruit crop. Water well.

Sow summer herbs now, don't get carried away, a few seeds go a long way. It's also time to plant parsnip for next winter.

Rosemary is a great plant that needs minimal attention. This herb not only is an attractive bush but has great uses in the kitchen. Remember to maintain shape and growth, prune lightly after flowering, when picking rosemary tips for the kitchen, cut back the whole branch rather than just snipping off the tips.

Replace tired spent spring annuals with summer colour. Try Dianthus, Calendulars, Cosmos, or Daisy.



Roses are in full flush now and are looking gorgeous, dead heading will keep them attractive. If your roses are looking good, don't worry about spraying, unless you see aphids or blackspot, or real rain is threatened, then spray a couple or three close sprays, that is two days apart, then resume normal monthly routine.

With Christmas just around the corner, the festive season will be taking priority, but a little attention is important to ensure your vegetables continue to be productive throughout the summer.

Enjoy the holiday season and have a safe and happy Christmas.

Take care, Jennifer



LADIES A PLATE

Frozen Chocolate Cheesecake

Cheesecake can be frozen for up to a month. Decorate before serving

A great way to use up those egg yolks left over from the Pavlovas

Serves 10

150g unsalted butter melted	1x250g pkt cream cheese softened
1 pkt sweet biscuits, crushed	1x litre carton vanilla ice cream softened
5 egg yolks	½ cup castor sugar
200g dark chocolate grated	

Whipped cream, extra grated chocolate and berries to decorate

Combine butter and crumbs in a bowl; mix well. Press evenly and firmly over base and up sides of a deep, 25cm flan tin refrigerate 30 minutes.

Beat the egg yolks and sugar in a small bowl with an electric mixer until thick and pale in colour.

Pour mixture into a heatproof bowl. Place over a pan of simmering water; stir constantly until mixture is heated through. Remove from heat, add chocolate; stir until melted.

Beat cream cheese in a large bowl with an electric mixer until smooth. Gradually beat in chocolate mixture, then ice-cream. Beat until well combined. Pour into flan tin, cover freeze overnight. (I had lots of filling left over so put in individual dishes in freezer)

Decorate with whipped cream, extra grated chocolate and berries.

Quick Pavlova Roll

4 eggs	2tsp vinegar
1tsp corn flour	8 Tbsp sugar
Coconut or almonds	1 bottle of cream

Separate egg whites beat a little add vinegar beat egg whites till stiff then add 6 Tbsp of sugar and corn flour beat till sugar is dissolved stop beating and stir in the last 2 Tbsp of sugar

Line a sponge roll tin with baking paper and spread mix out sprinkle with coconut or sliced almonds cook at 180 for 15 mins

Let cool turn out onto a tea towel. Whip cream and spread over the under side of Pavlova roll and put on a plate

No fuss whatsoever – until your guests take a bite.

Easy Christmas Pudding

Preparation time 15 minutes

Cooking time 5 hours

1 cup sultanas

1 cup raisins

1 cup currants

2/3 cup of pitted prunes chopped

1/2 cup of pecan nuts chopped

Juice and grated rind of 1 orange

1/3 cup of Brandy

2 Eggs

2/3 cup of thickened cream

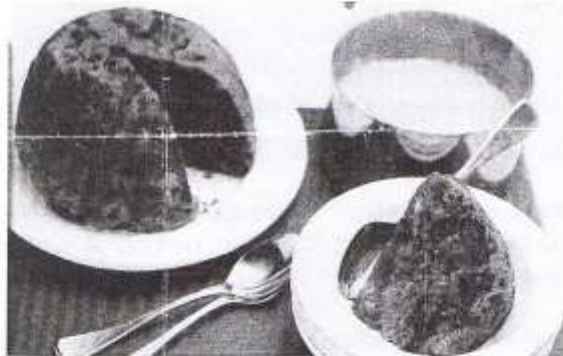
1 cup brown sugar

1 cup plain flour

1 1/2 teaspoons of cinnamon

1/2 teaspoon of nutmeg

1/2 teaspoon of Bicarbonate of Soda



1/ Combine fruit, nuts, orange juice & rind and Brandy in a bowl and mix well.

2/ In another bowl, whisk eggs, cream & sugar together.

3/ Sift flour, spices & soda over the fruit and stir in the egg mixture

4/ Line a greased 5 cup basin with baking paper and pour in mixture

5/ Cover with paper and foil or the lid & set in a saucepan with warm water half way up the sides of the basin. Bring to the boil, reduce heat to medium and boil for 5 hours. Add water as necessary.

6/ Lift pudding from the steamer, remove paper and invert onto a plate. Leave cool for an hour, then double wrap in foil and refrigerate until needed. Serve with Brandy cream, ice-cream or custard.

Tip. Reheat in Microwave on high for approximately 5 minutes.



Cherries



I always enjoy a feast of cherries when they are in abundant supply and fresh. What a great Christmas treat!

These sweet summer treats are potent detoxifiers and are useful in the prevention of cancer and have anti-ageing properties. A handful of cherries makes an ideal snack for dieters and they also have a low GI and GL rating.

They contain ellagic acid, a super nutrient that fights cancer, as well as antioxidants that fend off infections. Cherries are also anti-spasmodic and soothing for the digestive tract, especially when combined with yoghurt. Cherries are also rich in flavonoid such as anthocyanins, which helps boost the bodies immunity, also contain quercetin a strong anti-inflammatory substance which helps relieve painful joints and protects against eye disease.

The vitamin C in cherries help maintain healthy skin and hair and also aids the fight against viruses and bacteria.

Nutrients

Vitamin C, potassium, quercetin, anthocyanins, ellagic acid, beta carotene, folic acid, calcium, magnesium, phosphorous, potassium, and flavonoids.



Let our food be our medicine
and our medicine be our food.

Merry Christmas & Happy New Year!!!

By Cheryl McFarlane



Hair With Ease
YOUR MOBILE SALON

Women's Cuts
Colours/Foils
Kid's Cuts
Men's Cuts
Eyelash Tinting
Eyebrow Tinting

Call Nicola For Appointments
PH: 0275580583
EMAIL: NICOLA@HAIRWITHEASE.CO.NZ




Jo Stockley Just ask!
ADMIN PRO

- Local Accounts & Office Support
- your office or mine!
- Over 20 years experience

- ✓ Invoicing
- ✓ Accounts payable
- ✓ Credit management
- ✓ Bank reconciliation
- ✓ GST/PAYE
- ✓ Payroll

MYOB  

Ph: 07-8295829 | Mob 027-6950576 |
E: jo@adminpro.co.nz



Robert Macey Asparagus Ltd
165B Schollum Road Eureka

- *Fresh Asparagus Available
- \$4.00 500g \$8.00 1 KG
- Seconds sometimes available
- *New seasons extra virgin olive oil available

Hours Tuesday – Sunday 9.00am - 6.00pm
Phone: 8241998 Cell Phone: 0272929571
E-mail: arem48@xtra.co.nz

WOODLANDS HISTORIC HOMESTEAD
GARDENS AND FUNCTION CENTRE

Homestead Christmas display
opens Tuesday 27 November 2012- 3 January 2013
\$5.00 entry | Children under 12 free
Homestead and Cafe open
10am- 4pm | Tuesday- Sunday

Homestead and Cafe Christmas hours
Closed 24th- 26th December
opens 27th-30th December- closed 31st Dec, 1st-2nd January
Contact Woodlands ph. 07 824 3687
or email info@woodlands.co.nz
www.woodlands.co.nz



870 SH 26 Newstead
 Brent 0272 432 011
 mcfarlanes@farmside.co.nz

Ph 824 1186
 Brent 0272 432 011

- Hay / Haylage—round, square, conventional
- Grass & Maize Silage
- Full ground cultivation
- Maize and Crop Planting
- Land lease & Share Cropping
- Spraying
- Truck & Trailer Hire
- Digger
- Metal injected sub-soil irrigation



"Helping farmers feed their cows"



Ctas NZ Ltd

www.ctas.co.nz



Specialists in:

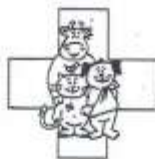
- Professional systems online and PC development
- Online internet based and PC/Lan Systems development
- Business Websites – FREE development (conditions apply)
Check out <http://ctas.co.nz/Webs/Home.aspx> to see more.
- Alert-Me - Online TXT and Email reminder system. Ideal for everything, from birthdays, appointments, sporting, gardening, TAX, WOF, Registration and many more. One off or recurring. Free for home use. Go to www.Alert-Me.co.nz
- YouTXT – Operate your own TXT shortcode using our TXT system for free. Go to www.youtxt.co.nz
- FlightCheck – Check your Flight details, real time from your Mobile Phone. TXT Flight number to 8808. Txt's cost 50c

Phone: 07 824 1025
 Email: grant@ctas.co.nz







Newstead Veterinary Services
 161 Morrinsville Rd (SH26)
 Phone (07) 856-4522 Fax (07) 8569487
 email: admin@newsteadvets.co.nz
www.newsteadvets.co.nz

We offer a comprehensive range of services for dogs, cats and small pets.

- Puppy pre-school classes
- Comprehensive range of pet care products and pet food
- Nutritional advice with onsite pet dietician and free weight clinic
- Cremation with a local pet crematorium, with optional return of ashes
- Isolation ward
- NZVA Microchipping Accredited Practice
- MAF Accredited vets for pet export certificates to Australia
- Ample parking

We believe that pets are important members of your family.

Eureka Precast Concrete

117 Hooper Road

**Manufacturer of the following
Farm and Small Block Concrete Products**

Palm Kernel Feeding Troughs

Feeding Pad Troughs

1,000 Litre Oblong Water Troughs


200 Litre Round Water Troughs

Offal Hole Lids

Septic Tank Replacement Lids

Plus Much More

Ph. Ian Manning – 0274 961902 824 1988 a.h.

JBVISSER VETS 

For your Livestock & Pets

07889 0414
0800 VISSER

jbvisservets@xtra.co.nz

See Us For All Your Animal Health Needs Including:

- *Farm/In-Calf Consulting
- *Trace Elements
- *Dairy Management Advice (Cows & Goats)
- *Scanning Dairy Cows
- *Lame Cows
- *Animal Health Products (drench etc)
- *Soil & Pasture Analysis
- *Lifestyle Block Service (all animals)
- *Pet Consultation/Vaccination
- *Pet De-Sexing
- *Pet Nutrition
- *Pet Dental

SERVING MORRINSVILLE, EAST HAMILTON, GORDONTON,
ORINI, TE AROHA, TAUWHARE, TAIHARE, PAMETONGA
AND EVERYWHERE IN BETWEEN!



TRAVEL

Your Editor has recently returned from six wonderful weeks touring Britain and Ireland and also Europe.

Fifteen countries touched on, and so many memories of magic places, and scenery, that certainly exceeded my expectations. The history alone was mind boggling but so very interesting. I could write a book – just kidding!

The 27 different hotel rooms encountered with the varying bathrooms, showers, plumbing, beds, pillows, aircon and amount of space to move, could fill a volume!

Suffice to say it was the trip of a lifetime for me, finally achieved at the age of 70! Instead of a travelogue I thought I would pass on some hilarious signs and notices seen by folk traveling in countries where English is not the first language.

Enjoy! *Gail*

- This afternoon there will be a meeting in the north and south ends of church – children will be baptized at both ends.
- In a **Bucharest hotel lobby**: The lift is being fixed for the next day. During that time we regret that you will be unbearable.
- **A Leipzig elevator**: Do not enter the lift backwards, and only when lit up.
- **Paris**: Please leave your values at the front desk
- **In a Yugoslavian hotel**: The flattening of underwear with pleasure is the job of the chambermaid.
- **In the lobby of a Moscow hotel, across from a Russian Orthodox cemetery**: You are welcome to visit the cemetery where famous Russian and Soviet composers, artists and writers are buried daily, except Thursday.
- **In an Austrian ski chalet**: Please do not perambulate the corridors in the hours of repose in the boots of ascension.
- **On the menu of a Swiss restaurant**: Our wines leave you nothing to hope for.
- **On the menu in a Polish hotel**: Salad, a firms own make, limpid red-beet soup with cheesy dumplings in the form of a finger. Roasted duck let loose and beef rashers beaten up in the country people's fashion.
- **Outside a Parisian dress shop**: Dresses for streetwalking.
- **Outside a Hong Kong dress shop**: Ladies have fits upstairs.
- **In a Rhodes Tailors Shop**: Order your summer's suit. Because is big rush, we will execute customers in strict rotation.
- **In an East African newspaper**: Our new swimming pool is rapidly taking shape since the contractors have thrown in the bulk of their workers.
- **In a Vienna hotel**: In the case of fire, do your utmost to alarm the hotel porter.
- **A sign from the Black Forest in Germany**: It is strictly forbidden on our Black Forest camping site that people of different sex, for instance men and women, live together in one tent unless they are married with each other for that purpose
- **A Zurich hotel**: Because of the impropriety of entertaining guests of the opposite sex in the bedrooms, it is suggested that the lobby be used for this purpose.
- **A Hong Kong dentist**: Teeth extracted by the latest methodists.
- **A Rome laundry**: Ladies, leave your clothes here and spend the afternoon having a good time.
- **Ad for donkey ride in Thailand**: Would you like to ride on your own ass?
- **Detour sign in Kyushi, Japan**: Stop: drive sideways
- **From a Swiss mountain inn**: Special today: no ice cream
- **In a Bangkok temple**: It is forbidden to enter a woman, even a foreigner if dressed as a man.
- **A Copenhagen airline office**: We take your bags and send them in all directions
- **Budapest Zoo**: Please do not feed the animals. If you have any suitable food, give it to the guard on duty.
- **Information on the air conditioner of a Japanese hotel**: Cools and heats. If you want just condition of warm in your room, please control yourself.
- **In a rental car inTokyo**: If passenger of foot heave in sight, tootle the horn. Trumpet him melodiously at first, but if he still obstacles your passage, tootle him with vigour.
- **On the door in a Moscow hotel room**: If this is your first visit to Russia, you're welcome to it.
- **From a Norwegian cocktail lounge**: Ladies are requested not to have children in the bar.
- **Acapulco hotel**: The Manager has personally passed all the water served here,
- **In a hotel in Athens**: Guests are expected to complain at the office between the hours of 9 & 11 daily.

Eureka Discussion Group Report Dec 2012

This is the last report for the year and another interesting one for the farmers from wet springs to shares going on the share market today, (as I write this anyway). The discussion group has been well attended throughout the season and many groups providing us with great solutions and challenges to take home to our own farms. We have had a few farmers get into the Nitti gritty and show us how their business is really performing and for me these groups using Dairy base are really good to compare business as there are so many inputs going in these days Ms/ha is no longer a good indicator as to how well a business is running. I thank all of the farmers who hosted groups this season and look forward to another good season next year.

Our last group was held at Anna Duncan's property on S/H 26 which was well attended and a bbq supplied by the Anexa animal health centre may have helped the cause, thanks for that. We talked about the importance of feed quality and how bad quality grass can actually decrease intake and therefore reduce milk solid production even more. There was a small surplus on the farm and cows were milking really well at 1.9ms/cow/day. We talked about NAIT the why's and what fore's and questions were answered for us not sure of how the system works and what was required of farmers.

Our next Discussion group is at The Mace property where Brad Van-Hellemond is share milking on the 11th December. That evening will be the Xmas Pot luck Dinner at Brett and Rachael Gordon's from 6pm.

Cheers all, see you then Brett Gordon



RAINFALL

	October 2012	Year to 31 st October
Total (mm)	95.5	1012
Average (1994-2012)	95.5	1006
Difference	0	+6

Rainfall recorded on 17 days.

	November 2012	Year to 31 st November
Total (mm)	51	1063
Average (1994-2012)	69	1075
Difference	-18	-12

Rainfall recorded on 10 days.





It has been a strange old season so far with pasture growth never really taking off for any length of time, but that being the case it has been a pretty good season production wise so far. Quite a few are ahead of the same time last year for season to date after a really good start. A key factor will how much rain we get before Christmas. Soil moisture deficits are not quite as low as last year but soils are drier than average for early December.

Farm Purchasing:

The final Eureka Discussion Group for the year is being held at Brad van Hellermond's on Waverly Road at 11am on Tuesday 11th December. Brad is a 50/50 Sharemilker looking to buy his first farm. We are going to have a session on this topic of farm purchasing. How much can one afford to pay for a farm? What are the golden rules when buying a farm, especially your first farm? That same night the annual Discussion Group pot luck BBQ is being held at Brett & Rachel Gordon's. Families welcome.

There will not be a Eureka Discussion Group in January but we will start again on the second Tuesday of February (12th). Venue to be confirmed. March 12th group day will be at Martin & Mark Sing's 2 farms on State Highway 26 at Motumaoho. We will use DairyBase financial and physical KPI's to benchmark these 2 different farm systems.

Can I wish you a happy Christmas period, with a decent amount of rain. Enjoy the change in pace and some quality time with family and friends. Make sure the BBQ bottle is full and then use it. There are some thoughts below on eating and drinking habits but whatever you do don't drink and drive. Take care.

Eating and drinking habits:

For those of you who watch what you eat, here's the final word on nutrition and health. It's a relief to know the truth after all those conflicting nutritional studies.

1. The Japanese eat very little fat and suffer fewer heart attacks than Americans.
2. The Mexicans eat a lot of fat and suffer fewer heart attacks than Americans.
3. The Chinese drink very little red wine and suffer fewer heart attacks than Americans.
4. The Italians drink a lot of red wine and suffer fewer heart attacks than Americans...
5. The Germans drink a lot of beer and eat lots of sausages and fats and suffer fewer heart attacks than Americans.

CONCLUSION: Eat and drink what you like. Speaking English is apparently what kills you.

Phil Irvine
Senior Consulting Officer
DairyNZ





Newstead Veterinary Services
161 Morrinsville Rd (SH26)
Phone (07) 856-4522 Fax (07) 8569487
email: admin@newsteadvets.co.nz
www.newsteadvets.co.nz



You are what you eat.....

Our pet's appetites can be as different as they are. There is the Labrador whose food doesn't even touch the side of their mouth it is wolfed down so quickly, to the cat who will only condescend to eat if the can has been freshly opened in front of them. And then there are all the others in between!



The food that we feed our pets affects their body in a number of ways. A diet deficient in the basics can lead to

- a dull coat, low energy levels,
- lots of soft faeces to clear up,
- excess wind,
- tartar build up which then necessitate dentistry,
- weight gain or weight loss, and
- even smelly breath!

There is a huge range of pet foods available from pet shops, supermarkets, web site etc. The choice is immense and it can be difficult to know if what you are feeding is best for your pet. Not all pet foods are the same. Just because it is the same bag of food, does not mean that the ingredients are the same bag to bag – Is this why kitty is turning her nose up at it?

At Newstead Vets we stock the world's top 3 brands of premium dog and cat food. They are Hills Science Diet, Eukanuba/lams and Royal Canin. The ingredients in these foods have clinically proven health benefits. It is the best food that you can buy for your pet.



Eukanuba
FOOD THE GREEN

ROYAL CANIN

Benefits to your pet include:

- ✓ coat improvement visible within a few weeks of starting so that your pet has a lustrous, shiny coat.
- ✓ less faeces to pick up as more of the food is absorbed and it will be firmer and easier to pick up!
- ✓ teeth will be cleaner
- ✓ breath less smelly
- ✓ less wind produced
- ✓ ideal body weight if fed correct amounts for the individual animal

Benefits to you include:

- a money back guarantee if your pet will not eat it,
- a loyalty card with 1 bag free for every 10 purchased giving you a 10% discount with each purchase.
- Nutritional advice by our trained nursing staff to help you with your choice.
- **Purchase from our on-line shop and get free freight on orders over \$100 at www.newsteadvets.co.nz**

It has long been perceived to be expensive to feed your pet on premium food but it is surprisingly affordable.

- ❖ A cat can be fed on as little as 90c a day with lams, and
 - ❖ A 15-20kg dog can be fed on as little as \$1.40/day with Eukanuba.
- We challenge you to see how much you are currently spending on your pet each week!*

SPECIAL TO YOU – Mention this article in clinic and get \$5 off any bag of premium food (expires 31st December not available at on-line shop)

NEWS FROM YOUR WAIKATO DISTRICT COUNCILLOR

It gave me great pleasure to be invited to attend the recent opening of the **Tauwhare School Swimming Pool**. The School Community is to be congratulated on a tremendous achievement, building this fine facility with seating and changing sheds - I noted the large number of sponsors. I know it has taken some time to complete the project but it has certainly been worthwhile. Jill and I attended the **Twilight Outdoor Concert at the Sculpture Park on 2nd December** which was raising further funds for the pool project. Despite the wet weather it was an extremely enjoyable few hours of entertainment by first class singers including Fiona, the School Principal.

I was recently invited to the launching of the **Te Awa Great New Zealand River Ride** initiative. Three Councils are involved - Hamilton City and Waikato and Waipa District Councils. The river ride will eventually go from Ngaruawahia to Cambridge along the banks of the Waikato River and will be built over a period of 5-6 years funded by the three Councils and other outside funders. Waikato District Council is contributing \$900,000 towards the project. The Te Otamanui Walkway - Stage One was opened on 10th November.

The **Tamahere Structure Plan** is now completed and has been put out for consultation and submissions have been heard. There was general support for the Structure Plan. Some issues of concern are roading connectivity, storm water, business and recreation zoning and the design guide and concept plan.

Ten Waikato regional and district councils have collaborated to jointly tender their insurance renewal through Local Authority Shared Services Ltd (LASS). The Mayoral Forum was this week told this will collectively save ratepayers almost \$700,000 this financial year and the majority of the savings would be ongoing. Waikato District Council's savings are likely to be in the \$70,000 - \$90,000 range.

A contract has been let to rehabilitate 0.74km of Victoria Road at the intersection of Hiwi Road. Construction is to commence in February 2013.

Construction of the 11.4km, \$248m, Ngaruawahia Section of the Expressway is making very good progress and is on target to open for traffic by mid to late 2013. Fletcher Construction will complete the bulk earthworks and drainage during the November - March summer months, bridge construction is ongoing and landscaping will commence in the autumn planting season. Construction will close down for a week during the Christmas holiday period with some traffic management in place.

Approximately 200,000 million cubic metres of sand and soil was shifted to construct haul roads, road embankments and to assist with settlement in peat areas. Fletchers' environmental team had a full time job over the winter months ensuring that the site access points remained clean and no dirty water was released in to the waterways. There are seven overbridges in the section, including overbridges on Gordonton Road, Kainui Road, Lake Road and River Road and a bridge over the Waikato River at Horotiu - south of the existing bridge. This new bridge will be constructed using four distinctive "V" piers. The bridge beams will be assembled on the southern banks of the river and then launched across the river in three stages. Once the beams are across the river precast concrete panels will be lifted in to place by crane before construction begins on the final deck and barriers.

All hall committees recently received a letter from Richard Bax, General Manager Water & Facilities, enclosing *Hall Management Committee Terms of Reference*. Councillors and the Mayor were not aware of the letter being sent and received a copy after the event so did not have an opportunity to go through the *Terms of Reference* before they were dispatched for comment. I know it has caused a lot of angst among hard working committees (including my own hall committee). The document is based on those in place in another District Council area so they may not be appropriate for Waikato District.

We realise Hall Committees need time to study the *Terms of Reference* and return the questionnaire (with an attached sheet if you wish to make additional comments). The deadline was 6th December - this has now been extended. Richard Bax is sending out another letter with a new time scale for return of the questionnaire.

Secondly another letter has gone out from Council regarding the release of rating funds to hall committees.

If you have concerns about either letter please phone me.

My family join me in wishing you all a happy and safe Christmas and New Year.

Rob McGuire

Councillor Eureka Ward

Ph. 824 3696 / fax 824 3645

Mob 0274 970 966 / email robmcguire@xtra.co.nz



THE BEAUTY HOUSE

Personalised, friendly service

GIFTS @ THE BEAUTY HOUSE

Lots of new stock available! Very reasonable prices!

Please phone to check in home or don't have a client if you would like to call in for a gift after 5pm & weekends also okay.

SHOP OPEN CHRISTMAS EVE

NEW - SHELLAC GEL NAILS LONG LASTING COLOUR ONLY \$45
SPRAY TANS FULL BODY ONLY \$30, EYE WORKS - BROW/LASH TINT & SHAPE ONLY \$30
10% DISCOUNT ON ALL DERMATECH, OASIS & BELLA VI PRODUCTS FOR DECEMBER

(Eft-pos available)

dermatech

Bella Vi
PURE NATURAL COSMETICS



Oasis beauty

Tauwhare Village, 10926 Tauwhare Road

Ph: Jacqueline 8240950 or 0274 853985 Email: thebeautyhouse@xtra.co.nz



find us on

Facebook

The Beauty House



**** NOW IN EUREKA ****

Plus MORRINSVILLE & HAMILTON

2012 CLASS TIMETABLE

PRICES

Mon 6.30 - 7.30am Eureka - Eureka Hall, SH26	Casual	\$10
Tues 7.30 - 8.30pm Hamilton - St Peter's Hall, 51 Victoria St CBD	Student/Pensioner	\$ 6
Wed 6.00 - 7.00pm - Morrinsville - Senior Citizen Hall, Canada St.	Concession Cards -	
Fri 6.00 - 7.00pm - Morrinsville - Methodist Church, Thames St	(for 10 Classes) \$70 (3 months)	
	(for 20 Classes) \$120 (6 months)	
	Family Pass \$20 (2x adults	
	and 2x children (under 14 yrs)	

FIRST TIME IN CLASS ONLY \$4

Join Zumba instructors - Megan Hyland, Sarah Rasmussen, Marcia Davie
Phone: 021 905335 (Megan) 0273871333 (Sarah) Email: megan.zumba@xtra.co.nz

belles & brides



Hair - Makeup - Beauty Therapy

www.bellesandbrides.co.nz

Ph (07) 8241852 or 0226717588

Belles & Brides is the Waikato's most comprehensive mobile beauty service. We offer a huge range of beauty services including amazing discounted pamper packages and at-home pamper parties!


Jump onto our website and visit our facebook page to see our upcoming events, current specials and our full range of services!



Gayle Orr
 Spiritual Counsellor & Teacher
 Working with angels to relay
 Messages from loved ones
 Personal Readings
 Healing
 Spiritual Counselling
 Meditation & Relaxation Classes

**For a personal reading
 phone: 07 824 1713**

ROSS PUMPS
 &
 Filtration Specialists Ltd



Servicing and installation
 On all types of pumps
 Full Water Treatment
 Service Available

DAREN ROSS
 Tel. 8241 726 or 0274 346 571
 Fax. 8241 879

CALF COVERS
 "Canvas, Jute, or satin
 lined for Calf Club"

I also manufacture horse covers, trailer covers or any other kind of cover you may want. Good quality, P.V.C. horse gear bags — can also be used for dive bags. Good quality at reasonable prices.

**Phone Narelle Pollock
 824 0736**



**CAMBRIDGE
 CARPET
 CLEANING**
Servicing the Waikato

Also

- ✓ Upholstery Cleaning and Protection
- ✓ Flood Restoration
- ✓ Stain Treatment
- ✓ Auto and Marine Work
- ✓ Window Cleaning
- ✓ Senior Citizens Rates

**Phone Grant on 0275 542 116
 Or 07 823 7031
 Locally Owned and Operated**

**Local builder
 Tauwhare Road resident
 Registered Tradesman**



- Concrete work
- New homes
- Renovations
- Alterations
- Farm buildings
- Decks
- Fences
- Bathrooms
- Kitchens
- Roofing

30 years building experience

Craig Griffin Builders Limited
 Phone Mobile: 027 279 2682
 Phone/Fax After Hours: 824 1607
 Email: craigandjackiegriffin@ihug.co.nz



nzgardensheds
the best little Sheds around!

Your local garden shed supplier of NZ made, self assemble Garden Sheds (Zincalume or Colour Steel)

GET IN TOUCH...

- * EASY ASSEMBLY
- * MADE TO LAST!

Waikato Shed Company
 218 Hunter Road, Eureka,
 Hamilton
 Phone: 07 824 1045
 Email: sales@nzgardensheds.co.nz

EQUIRE FOR A BROCHURE NOW

**Residential
 Interior Design**

- Colour schemes and advice
- Home organization ideas
- Maximise interior space and use
- Personalise your home



**Phone Leanne Hilder
 07 824 1023 or 021 911 621
 Email: leanne.hilder1@gmail.com**

Scanlan & Jones

Specialists in:

- ✓ Wood Fire Sales
- ✓ Wood Fire Installation/Repairs
- ✓ Hearth Manufacturers
- ✓ Outdoor Fire Installations
- ✓ Chimney Sweeping
- ✓ Heat Transfer Kits — Sales & Installation

Registered Installers
 Over 17 Years Experience
 Free Quotes



**Contact Justin & Brendon
 0274 834 267 (day)**

A/Hrs: 07 824 0950 Fax 07 824 0951
 Email: scanlan.jones@xtra.co.nz

Member of New Zealand Heating Association 

HAIRFIELDS
 HAIR DESIGN
 95 HOOPER ROAD
 Sharon Laurent

Full salon facility in Eureka
 Total hair care professional
 with many years experience
 Agent for Nutrimetics also



Open Tuesday to Friday
 Late nights Tues/Thurs
 Tel. 824 1712 or 027 280 5978

SPYVES PANEL SHOP

for all
Panel and paint requirements



AUTOROBOT CHASSIS and ALIGNMENT MACHINE

Ph Ron or Karen 8241 890
Fax 8241 892
Mob 027 280 0346

Maurice Jackson

phone 027 271 6846
jackson56@clear.net.nz



Agriculture Contract Spraying For Urea and Eczema

Experienced Rural And
Lifestyle Block Fencer

COMPUTERISED BULK SPREADERS LTD

For all your spreading needs



FERTILIZER, LIME, UREA

Top Service,
Competitive Rates

Roger Springett
103 Hooper Road Eureka
Ph. 8241 175
Mob. 0274 970 413

EUREKA POULTRY FARM

13 Hooper Road
Ph 824 1762
NIC & MARIA STOLWYK
Hobby Hens



Young pullets from
5 weeks to point-of-lay
Great for lifestylers
Bagged up chook manure
Hours Mon-Sat 8-6

Green Acres

Professional lawn and
Garden care service



Maurice Smith

For free no-obligation quote:
Ph: (07) 824 1948
Mobile: 0274 797 282
Fax: (07) 824 1947
Email: msmith@clear.net.nz
Ride-on mowing specialists
Give your lawn the perfect finish

IAN MANNING REGISTERED DRAINLAYER



For all drainlaying work
New or alterations
Residential & Commercial
Blocked drains cleared
Maintenance
Prompt service

Tel. 8241 988
Fax. 8241 989
Mob. 0274 961 902

Kelvin Lalich Builders Ltd

- New homes
- Alterations
- Large & Small
Commercial Buildings
- Chicken Sheds

Phone 889 3951 (bus)
889 3975 (a/hrs)



**"Building
with Pride"**

FRESH APPLES & PEARS STONEFRUIT IN SEASON



NEWSTEAD ORCHARD
552 Morrinsville Road

OPEN MON-SAT.
W J McMiken & Co
Morrinsville Road
Tel. 856 4478



TAUWHARE HOME KILLS

TREVOR & LEONIE BRUNTON

1126 TAUWHARE ROAD

PH: 07 824 0880

Fx: 07 824 0809



EUREKA MOTORS

COLIN DUNCAN (PROP), SH 26, OPPOSITE EUREKA HALL

WE ARE EQUIPPED AND SKILLED TO CARRY OUT ANY REPAIRS NEEDED ON ALL TYPES OF VEHICLES

Our experienced workshop staff guarantee to provide quality service to all our customers

If we don't have the right part in stock we'll get it for you straight away
If you need some work done, why not give us a try?

OPEN MONDAY - FRIDAY 7.30am - 6.00pm

SATURDAY 8.00am - Noon

Ph 8241 773 Fax 8241 073

WALLING CONTRACTING LTD **'YOUR PROVEN LOCAL ONE STOP CONTRACTORS'**

WE CAN OFFER YOU THE FOLLOWING SERVICES:



- *Grass Silage
- *Ploughing
- *Rotary Hoeing
- *Ripping
- *Undersowing
- *Baling & Wrapping
- *Digger (12 Ton)
- *Grass Crop Sales

- *Maize Silage
- *Power Harrowing
- *Discing
- *Maize Planting
- *Roller Drilling
- *Power Harrow/Seedbox
- *Shavings & Sawdust
- *Maize Crop Sales

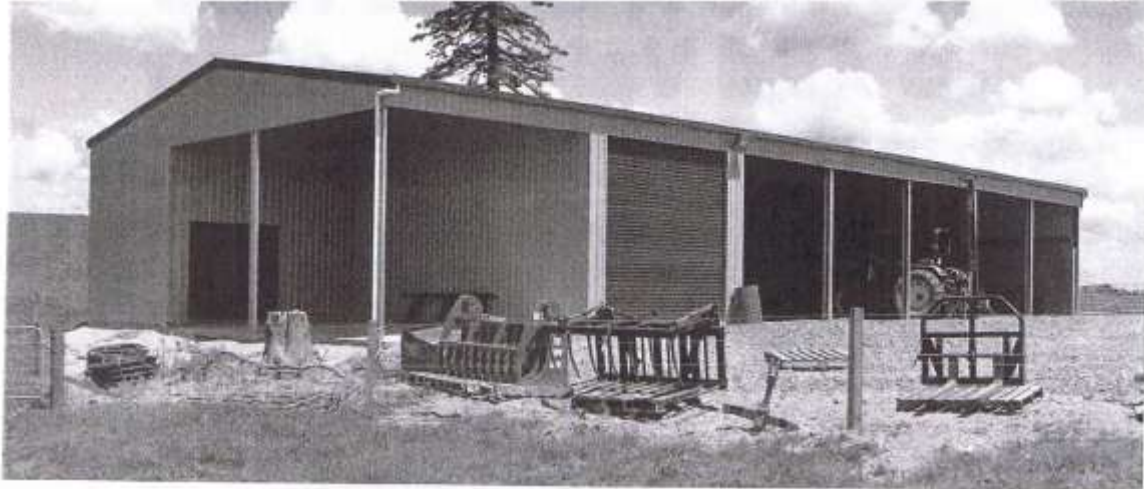


**FOR ALL YOUR CONTRACTING NEEDS
PHONE LEN OR BECKY
ON**

824 0894 (anytime)



LOCAL COMPANY, LOCAL PEOPLE, LOCAL SERVICE



FULL DESIGN & BUILD OR KITSET ONLY OPTIONS



FREE, NO OBLIGATION DESIGN & QUOTE SERVICE

If you need a shed that's built to last from top quality materials you can't go past our sheds. With heavy duty steel framing and Zinalume or Coloursteel cladding you will get the strength and durability that lighter steel and timber framed buildings simply can't compete with.

It's not enough too just have a great building system. You also need professional people with the knowledge & experience to deliver a great shed, done right. Being backed up by an international company means Waikato Shed Company is supported in their delivery of high quality building solutions. The end result is that you can have total confidence in the building design, construction process, & the people you are dealing with. It's the strength of our "chain" that is our advantage.

To discover the benefits of owning a Waikato Shed Company shed visit our website now.



Freephone **0800 555 147**
218 Hunter Road, Eureka
www.waikatosheds.co.nz

WAIKATO SHED
COMPANY ✓
great sheds, done right!
Hamilton • Taupo

Now Is A Great Time To Add Value To Your Property With A New Shed

Waikato Shed Company offers a true custom design & build service that ensures you get the very best shed for your needs that is outstanding value for money. We listen to what you want because we understand that one size does not fit all. In fact in over 5 years we have never built the same shed twice.



FULL DESIGN & BUILD OR KITSET ONLY OPTIONS

- American Barns
- Aircraft hangars
- Workshops & storage
- Stables & arenas
- Industrial buildings
- No set size restrictions
- All steel construction
- Clear span (no web trusses) up to 35m
- Up to 7m eave height
- Any length
- Integrated mezzanine floor
- Full range of cladding colours & choices



FREE, NO OBLIGATION DESIGN & QUOTE SERVICE



Freephone **0800 555 147**
218 Hunter Road, Eureka
www.waikatosheds.co.nz

WAIKATO SHED
COMPANY
great sheds, done right!
Hamilton • Taupo